



# City of Green Administration Building

1755 Town Park Boulevard  
City of Green, Ohio 44215

Brian Koze  
Lighting & Electrical  
Lighting Proposal Memo  
September 13, 2010



## Summary

In this memo, I will specify and describe the four spaces which will be the focus of my thesis project. These spaces are as follows:

- Large Work Space: Planning & Engineering
- Special Purpose Space: Council Chambers
- Circulation Space: Main Lobby
- Outdoor Space: Entrance Structure and Facade

The one space which I will be creating three design concepts for is the Council Chambers. I will also be designing the lighting in the Main Lobby to produce the psychological impression of spaciousness.



## Large Work Space | Planning & Engineering

The Planning & Engineering Large Work Space is an open office used by the Planning & Engineering department of the City of Green Administration. It is located on the second floor in the West Wing, and is the largest open office space in the building.

Visual tasks for this space include navigation, horizontal and vertical plane reading, writing, and computer work.

This 3127 square foot space has an acoustic tile ceiling, painted gypsum board walls, glazing, metal window frames, wood furniture, and a carpeted floor. For more specific dimensions, refer to figure 1 of the images section of this memo

## Special Purpose Space | Council Chambers

The Council Chambers is where major city administration meetings take place. It is located on the ground floor of the east wing. The chamber has auditorium-like seating, with major city officials sitting in the front of the room. There are 109 seats for spectators, and 16 seats for city officials.

Visual tasks for the space include navigation, horizontal plane reading on desks, vertical plane reading on suspended video monitors, and presentation. These meetings and presentations are sometimes televised so it is important for the lighting to render people properly.

This 2062 square foot chamber has an acoustic ceiling tile with sections of gypsum board drop ceiling arranged in a grid pattern. The walls are painted gypsum board with some sections of architectural carpentry, and the floor is carpeted. There are wooden desks at the front of the chambers. For more specific special dimensions, refer to figure 2 of the images section. For images of the space, refer to figure 3 of the images section.



## Circulation Space | Main Lobby

The main lobby is the first space occupants see when they enter the building. It allows for circulation to the main wings on the first and second floor. The lobby features a distinct stair case leading up to a mezzanine level. There are decorative and structural columns scattered throughout the space. The secretary's desk is located directly in front of the entrance doors. Also, general seating is located near the perimeter of the lobby.

Visual tasks include reading, writing, and computer work on the secretary's desk and the surrounding general seating, and navigation.

This Main Lobby is 2257 square feet on the ground level, and 1047 square feet on the mezzanine level. The entrance doors are glass with metal trim. The interior walls are brick, with some gypsum board and wood section. There are also painted decorative and structural columns. The furniture is wood, and the general seating is upholstery. For more detailed dimensions refer to figure 4 in the images section of this memo.

## Outdoor Space | Entrance Structure and Façade

The Entrance Structure consists of a single story covered walkway leading to a two story clock tower. It attracts attention to the entrance of the building and accents the buildings architecture.

The only visual task for this space is walking / navigation. However the lighting should draw focus to the structure.

The Façade and Entrance Structure are various types of brick, with a glass ceiling. There are also painted structural columns on the single story section. The single story section is 33 feet long and 10 feet wide. The clock tower is 11 by 11 feet and two stories tall. Refer to figure five and six in the images section for drawings and pictures.



## All Spaces | Drawings and Images

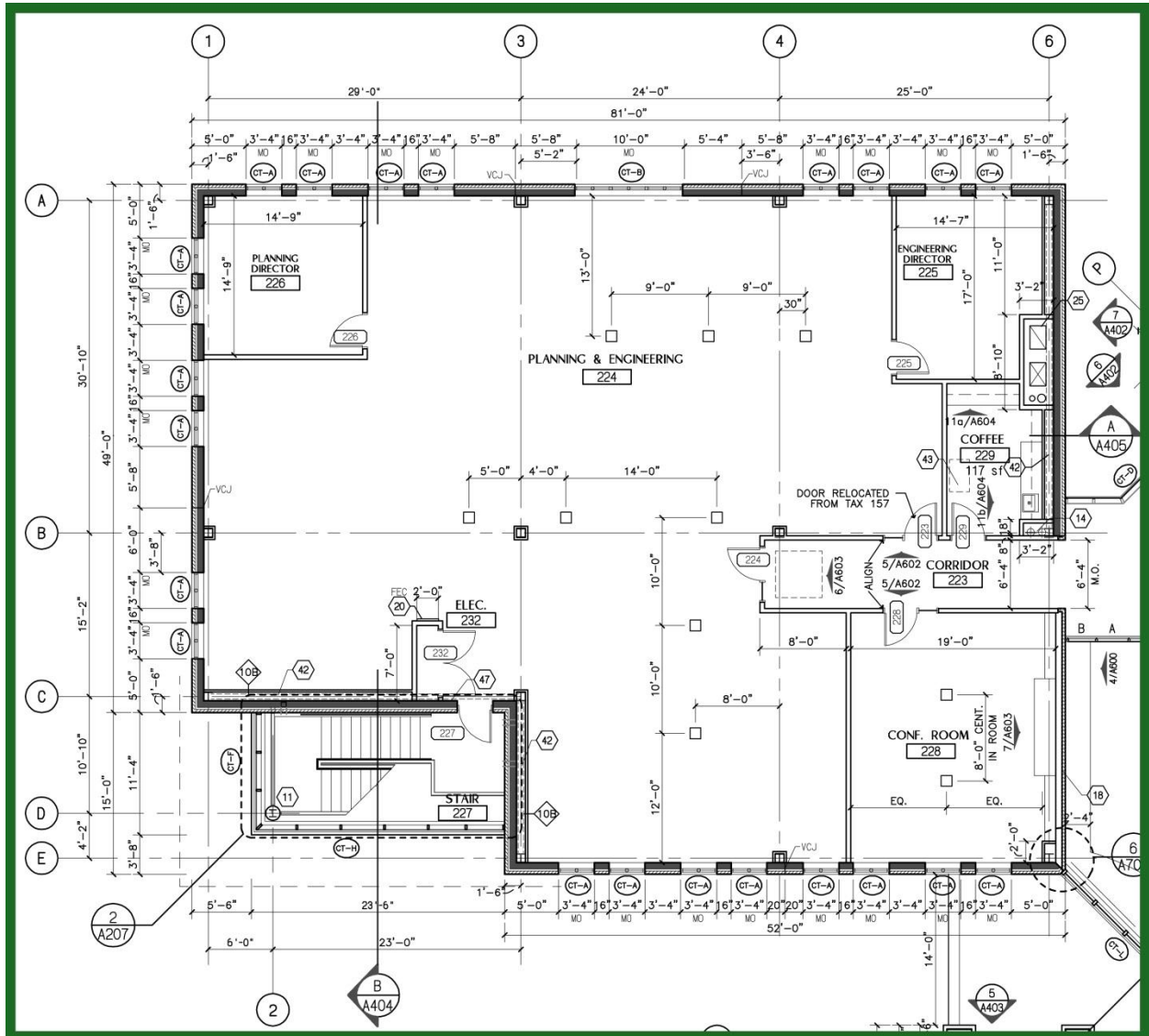


Figure 1 | Planning & Engineering Floor Plan

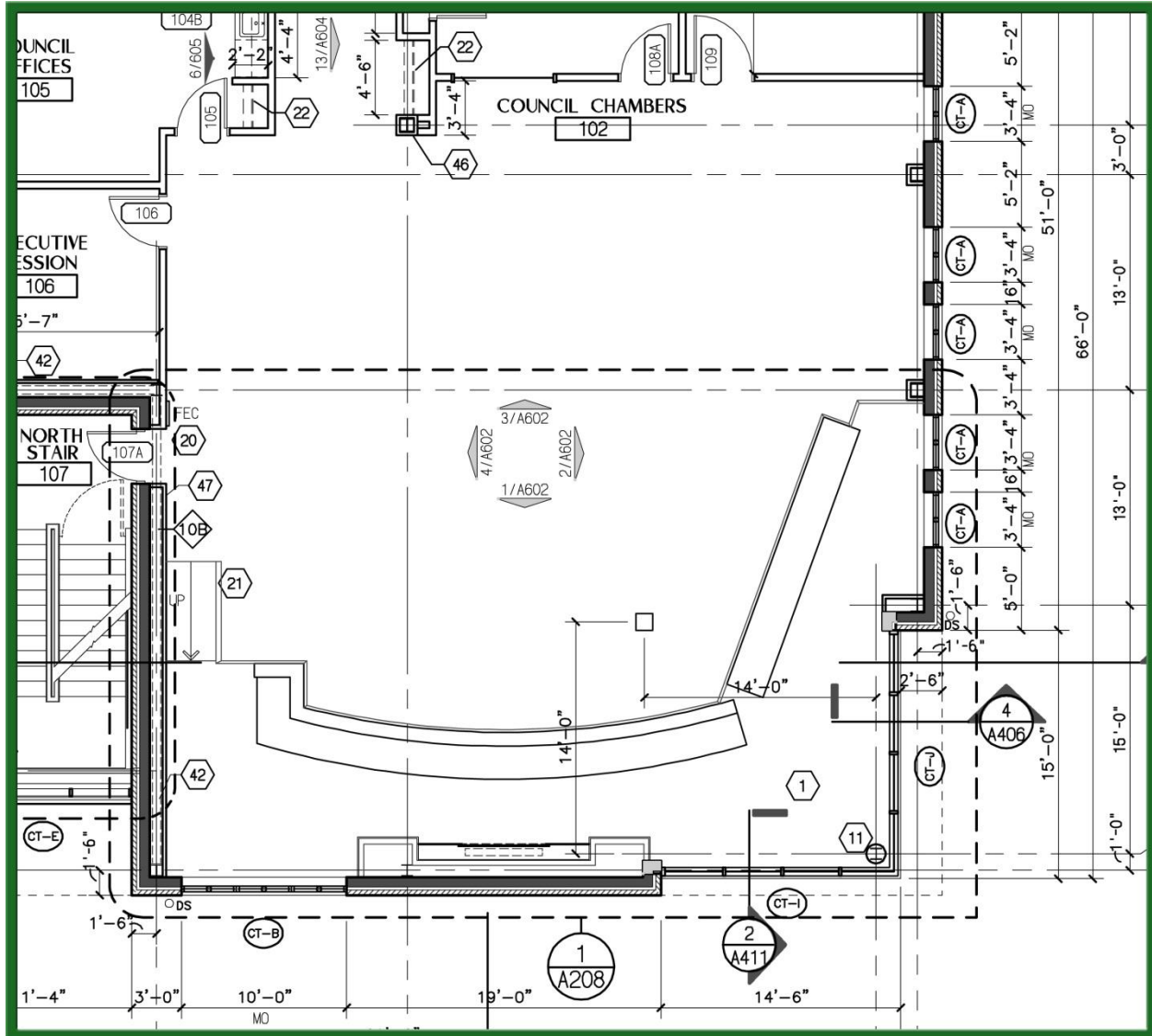


Figure 2 | Council Chambers Floor Plan



# City of Green Administration Building

1755 Town Park Boulevard  
City of Green, Ohio 44215

Brian Koze  
Lighting & Electrical  
Lighting Proposal Memo  
September 13, 2010



Figure 3 | Council Chambers Pictures



# City of Green Administration Building

1755 Town Park Boulevard  
City of Green, Ohio 44215

Brian Koze  
Lighting & Electrical  
Lighting Proposal Memo  
September 13, 2010

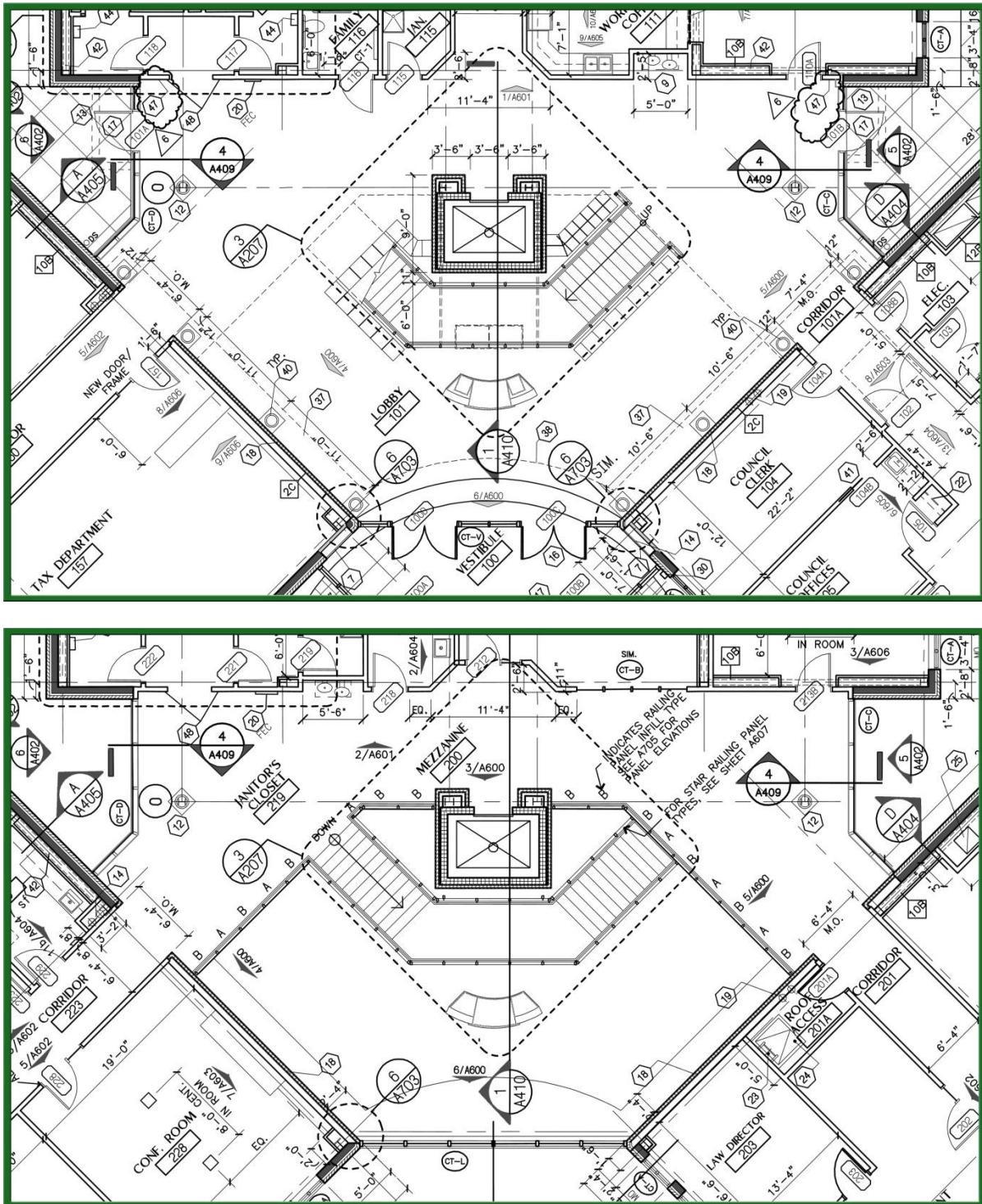


Figure 4 | Lobby Floor Plan (Ground and Mezzanine Floor)

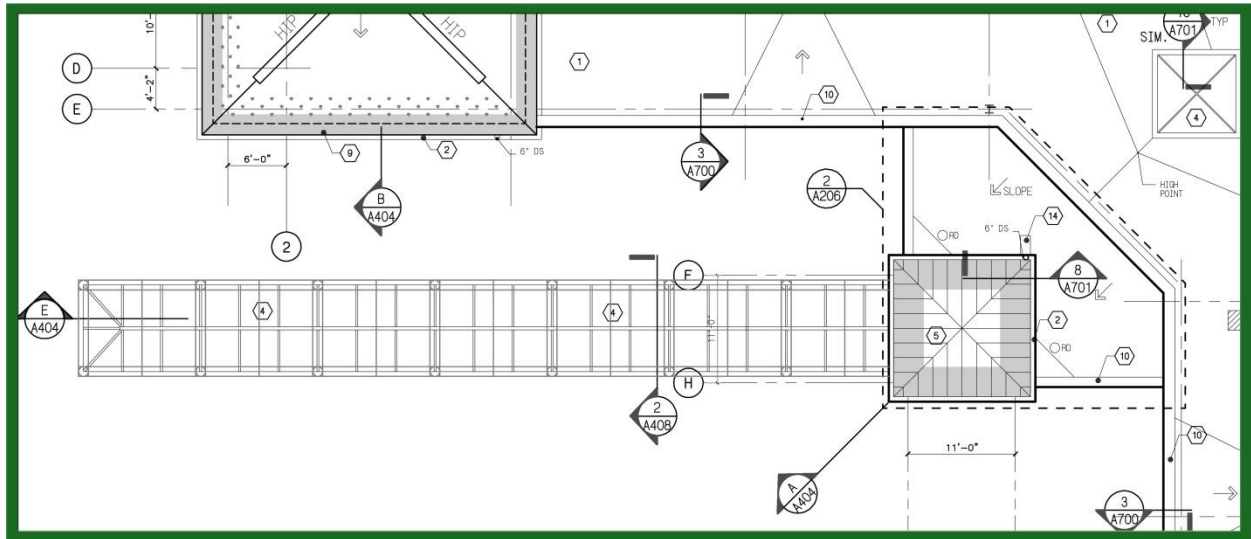


Figure 5 | Entrance Structure Roof Plan



Figure 6 | Entrance Structure Pictures